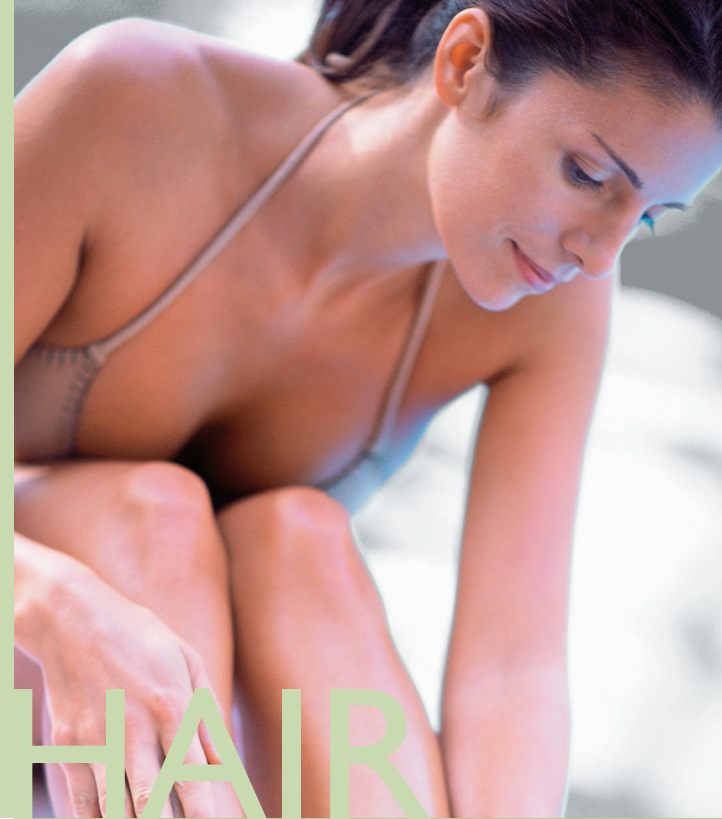


**N**ow men and women alike are making unwanted

facial and body hair a thing of the past – thanks to the Cutera CoolGlide Laser.

No more painful waxing, electrolysis or razors!

The CoolGlide laser delivers 21st century technology for treatment of this distressing problem. Cleared for permanent hair reduction, the CoolGlide laser can treat men and women of all skin types and tones safely and effectively. Even patients with a suntan.



# HAIR REMOVAL

COOLGLIDE® LASER

**CUTERA™**

WORLD HEADQUARTERS  
3240 Bayshore Boulevard, Brisbane, CA 94005  
Phone: 1-888-4CUTERA | [www.cutera.com](http://www.cutera.com)

© 2005 Cutera, Inc. All rights reserved. CoolGlide is a registered trademark and Cutera is a trademark of Cutera, Inc.

PB0001c

**CUTERA™**

# Cutera CoolGlide® Laser Hair Removal

FOR WOMEN & MEN OF ALL SKIN TYPES AND TONES

## The Cutera CoolGlide Difference

The Cutera CoolGlide is the best laser hair removal system on the market for all skin types and tones, from light to dark, including tanned patients. Its unique design, longer wavelength, and innovative cooling design, allow extremely effective, safe and permanent results.

## What areas can be treated with the CoolGlide?

The CoolGlide can remove hair from all parts of the body including the face, legs, arms, underarms, and back. It can also treat sensitive areas like the chest, nipples, and bikini line.

## What do CoolGlide treatments feel like?

As the name implies, the CoolGlide handpiece cools and soothes as it glides along your skin. When the pulse of light is delivered, some patients experience a mild pinching or stinging sensation. No local anesthesia or pain medication is typically required; however, some patients may prefer to use a topical anesthetic when sensitive areas are treated.

## How many treatments will I need?

Most areas require 3-6 treatments. However, the number of CoolGlide treatments required for optimal long-term benefits depends on multiple factors – hair thickness, the area treated and your hair's growth cycle. Interestingly, not all hairs are actively growing at the same time and actually go through three distinct phases: growth, regression, and resting. CoolGlide treatments work by disabling the hair that is principally in the active growth phase at the time of treatment. Since other hairs will enter this active growth phase at different times, additional treatments may be necessary to disable all of the hair follicles in a given area.

## What happens after the treatment?

Immediately following your CoolGlide treatment, the area may appear a bit red and swollen. Three to seven days after treatment you may experience what seems to be regrowth of hair. Actually, most of these hairs are being shed as a result of your treatment and are not regrowing. Between treatments you should not wax or pluck your hair, but it is permissible to shave.

## Are there any restrictions on my activity after treatment?

Following the treatment, you can return to your normal activities right away, but some redness may occur. The use of sunscreen is recommended on any treated areas exposed to the sun. In addition, your physician may recommend that you use a specially formulated skin care product line or prescribe a skin care regimen especially formulated for your skin type.

## What are the possible side effects?

Although patients experience few side effects, the most commonly noticed are slight reddening and local swelling of the skin, similar to a sunburn. These effects typically last for several hours or less. In rare instances, blistering may occur. Consult with your medical professional for complete information on the benefits and risks of treatment.

## How does the CoolGlide compare with other hair removal methods?

Shaving, waxing, and depilatory creams are all temporary methods which must be repeated on a frequent basis. The CoolGlide offers permanent hair reduction for lasting results.

## How does the CoolGlide compare with electrolysis?

Electrolysis is a tedious, invasive, and painful process that involves inserting a needle into each individual hair follicle and delivering an electrical charge to them one at a time. Electrolysis often requires years of treatments at regular intervals. By delivering light energy to hundreds of hair follicles at a time, the CoolGlide effectively treats an area in just seconds that would take over an hour with electrolysis.

## Why choose CoolGlide over other laser hair removal systems?

Using the latest technology in laser hair removal, the CoolGlide can rapidly treat large areas without the limitations of older technologies. The CoolGlide longer wavelength allows it to be used safely and effectively on patients with light or dark skin as well as tanned skin. Unlike other systems, the CoolGlide can treat the fine hair on a woman's upper lip just as easily and effectively as the coarse hair on a man's back. The cooled handpiece increases patient comfort and minimizes the adverse skin reaction commonly seen with other lasers.



Photo courtesy Samuel Lederman, MD



Photo courtesy Samuel Lederman, MD

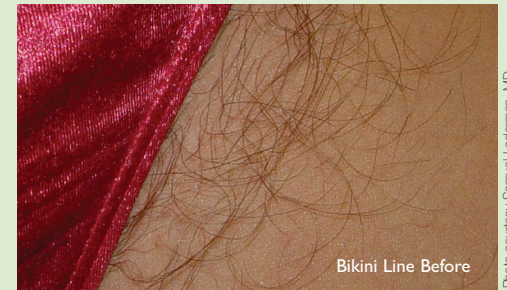


Photo courtesy Samuel Lederman, MD



Photo courtesy Samuel Lederman, MD

Schedule your consultation now to find out if you are a good candidate for CoolGlide Laser Hair Removal Therapy.

[www.cutera.com](http://www.cutera.com)